

LEXINGTON



Model Home at 4864 Sylvan Prairie Ct.
(Lot 107, Plat 6)

Call for Pricing

For More Information, Call
(419) 535-5697
Ext. #1 or #2

(419) 351-5320

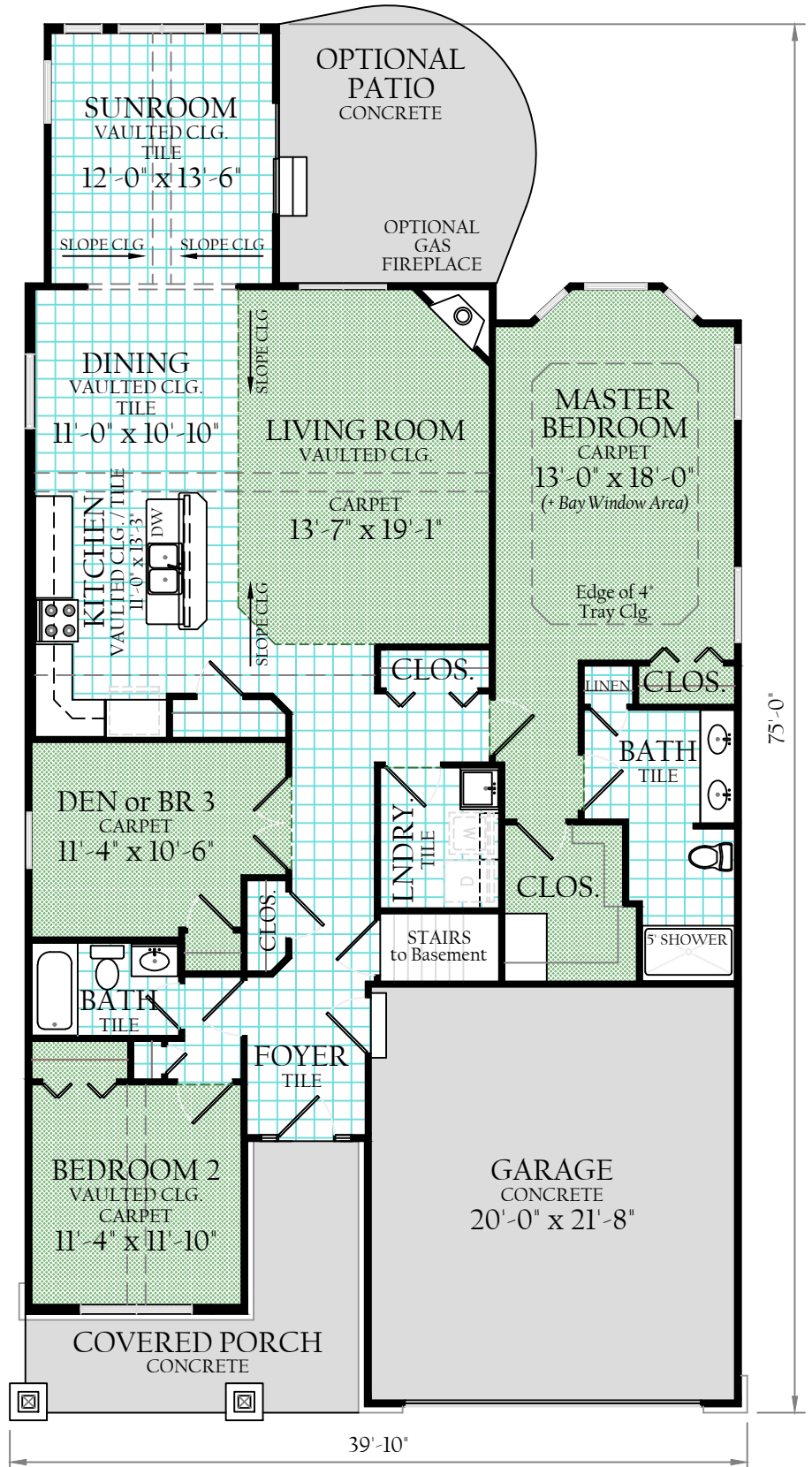
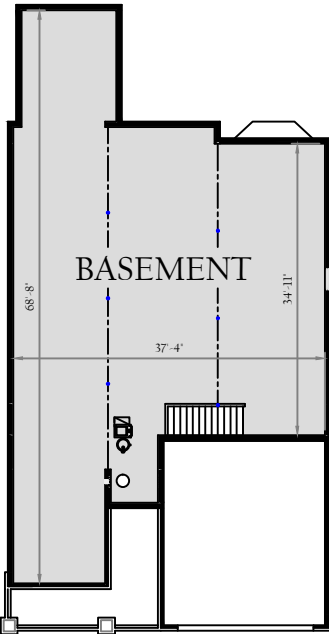
www.CumberlandConstruction.com

- KEY
-  CARPET
 -  CERAMIC TILE
 -  CONCRETE

LIVING AREA -
1,900 SQ. FT. ±

GARAGE -
463 SQ. FT. ±

BASEMENT -
1,753 SQ. FT. ±



All dimensions and square footages are approximate. Actual sizes may differ from this artist rendering. This drawing may show some items that are optional and extra in cost.

* Price and Availability subject to change without notice. Sale Price does not include Refrigerator, Clothes Washer, or Dryer.



(419) 535-5697
Ext. #1 or #2

(419) 351-5320

www.CumberlandConstruction.com

the LEXINGTON at
4864 Sylvan Prairie Ct.

Features:

1,900 Square Feet ±

Basement

3 Bedrooms

2 Bathrooms

Ceramic Tile

Vaulted Ceilings

Finished Sunroom

Open Plan

Maple Cabinets

Granite Countertops

Stainless Steel

Appliances

LEXINGTON MODEL with BASEMENT at 4864 SYLVAN PRAIRIE CT. (Lot 107, Plat 6)



Similar Home Pictured

4864 Sylvan Prairie Ct. is Currently Under Construction

Square Footages Are Approximate

6.7.18