

# LEXINGTON

Model Home at 4861 Sylvan Prairie Ct.  
(Lot 99, Plat 6)

Call for Pricing

For More Information, Call  
**(419) 535-5697**  
Ext. #1 or #2

**(419) 351-5320**

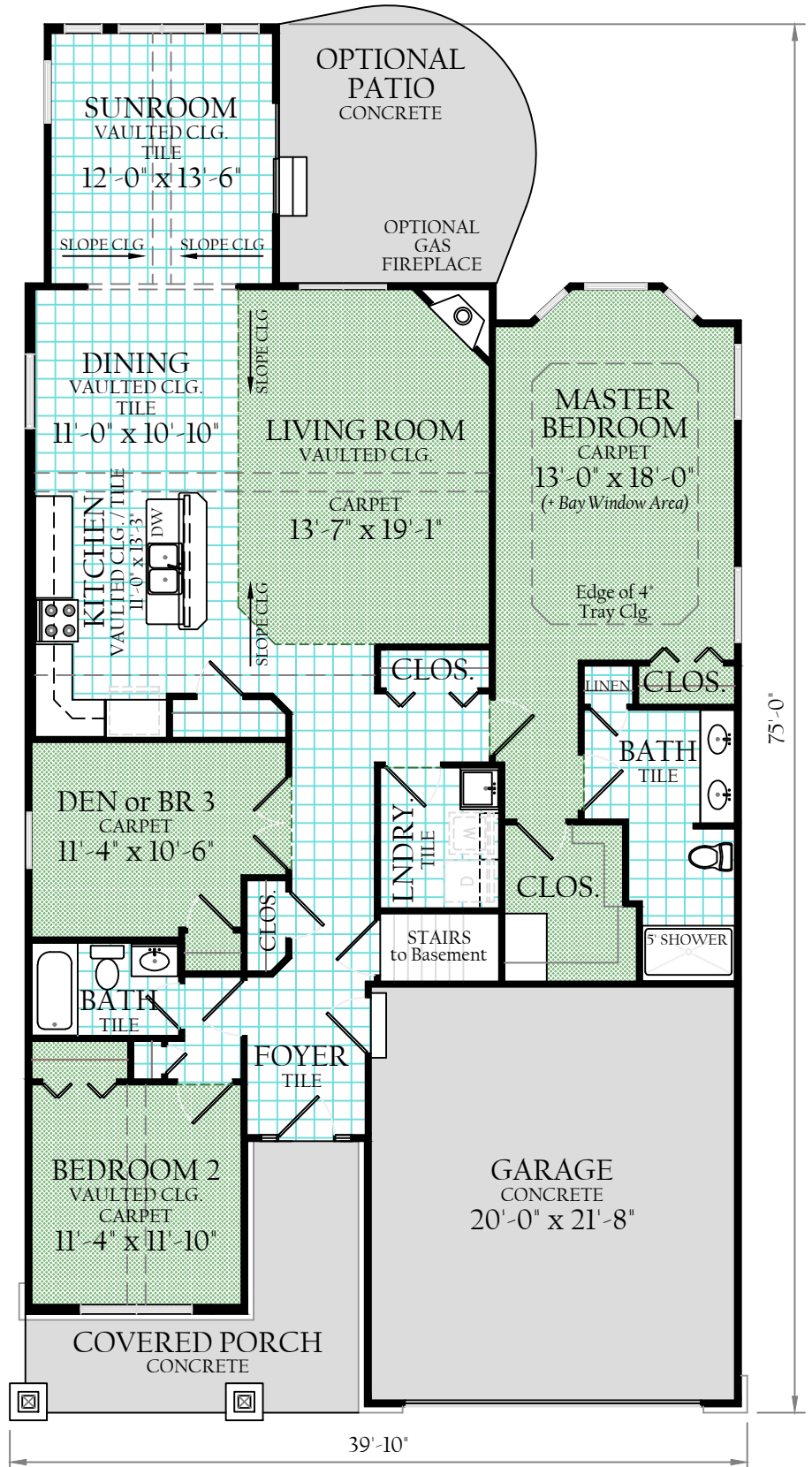
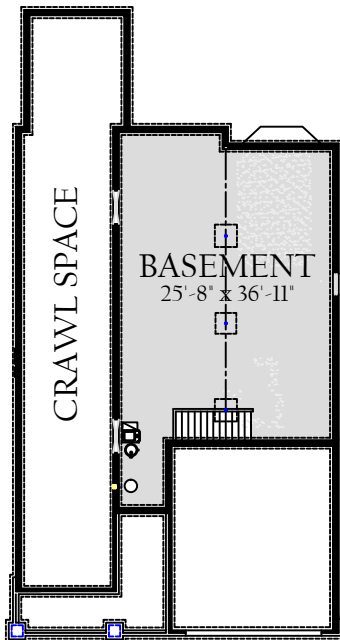
www.CumberlandConstruction.com

KEY	
	CARPET
	CERAMIC TILE
	CONCRETE

LIVING AREA -  
1,900 SQ. FT. ±

GARAGE -  
463 SQ. FT. ±

BASEMENT -  
967 SQ. FT. ±



All dimensions and square footages are approximate. Actual sizes may differ from this artist rendering. This drawing may show some items that are optional and extra in cost.

\* Price and Availability subject to change without notice. Sale Price does not include Refrigerator, Clothes Washer, or Dryer.



(419) 535-5697  
Ext. #1 or #2

(419) 351-5320

[www.CumberlandConstruction.com](http://www.CumberlandConstruction.com)

the LEXINGTON at  
4861 Sylvan Prairie Ct.

Features:

1,900 Square Feet ±

**Basement**

3 Bedrooms

2 Bathrooms

Ceramic Tile

Vaulted Ceilings

Finished Sunroom

Open Plan

Maple Cabinets

Granite Countertops

Stainless Steel

Appliances

## LEXINGTON MODEL with BASEMENT at 4861 SYLVAN PRAIRIE CT. (Lot 99, Plat 6)



**Similar Home Pictured**

4861 Sylvan Prairie Ct. is Currently Under Construction

Square Footages Are Approximate

9.25.18