

LEXINGTON

Model Home at 4853 Sylvan Prairie Ct.
(Lot 97, Plat 6)

Call for Pricing




For More Information, Call

(419) 535-5697
Ext. #1 or #2

(419) 351-5320

www.CumberlandConstruction.com

KEY:

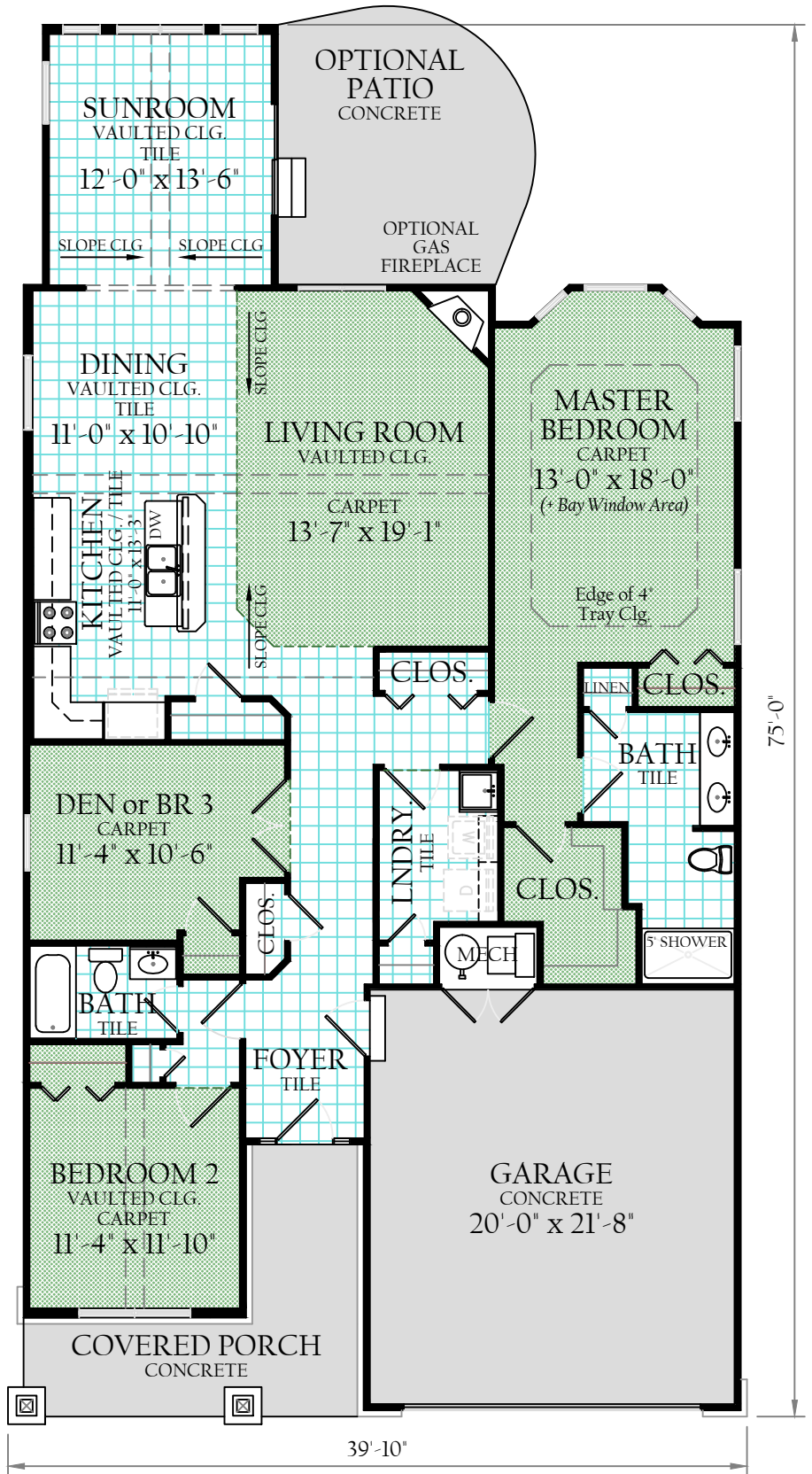
-  CARPET
-  CERAMIC TILE
-  CONCRETE

LIVING AREA -
1,900 SQ. FT. ±

GARAGE -
463 SQ. FT. ±

All dimensions and square footages are approximate. Actual sizes may differ from this artist rendering. This drawing may show some items that are optional and extra in cost.

* Price and Availability subject to change without notice. Sale Price does not include Refrigerator, Clothes Washer, or Dryer.





(419) 535-5697
Ext. #1 or #2

(419) 351-5320

www.CumberlandConstruction.com

the LEXINGTON at
4853 Sylvan Prairie Ct.
Features:

1,900 Square Feet ±
3 Bedrooms
2 Bathrooms
Ceramic Tile
Vaulted Ceilings
Finished Sunroom
Open Plan
Maple Cabinets
Granite Countertops
Stainless Steel
Appliances

LEXINGTON MODEL at 4853 SYLVAN PRAIRIE CT. (Lot 97, Plat 6)



Similar Home Pictured

4853 Sylvan Prairie Ct. is Currently Under Construction

Square Footages Are Approximate

1.12.18