

LEXINGTON

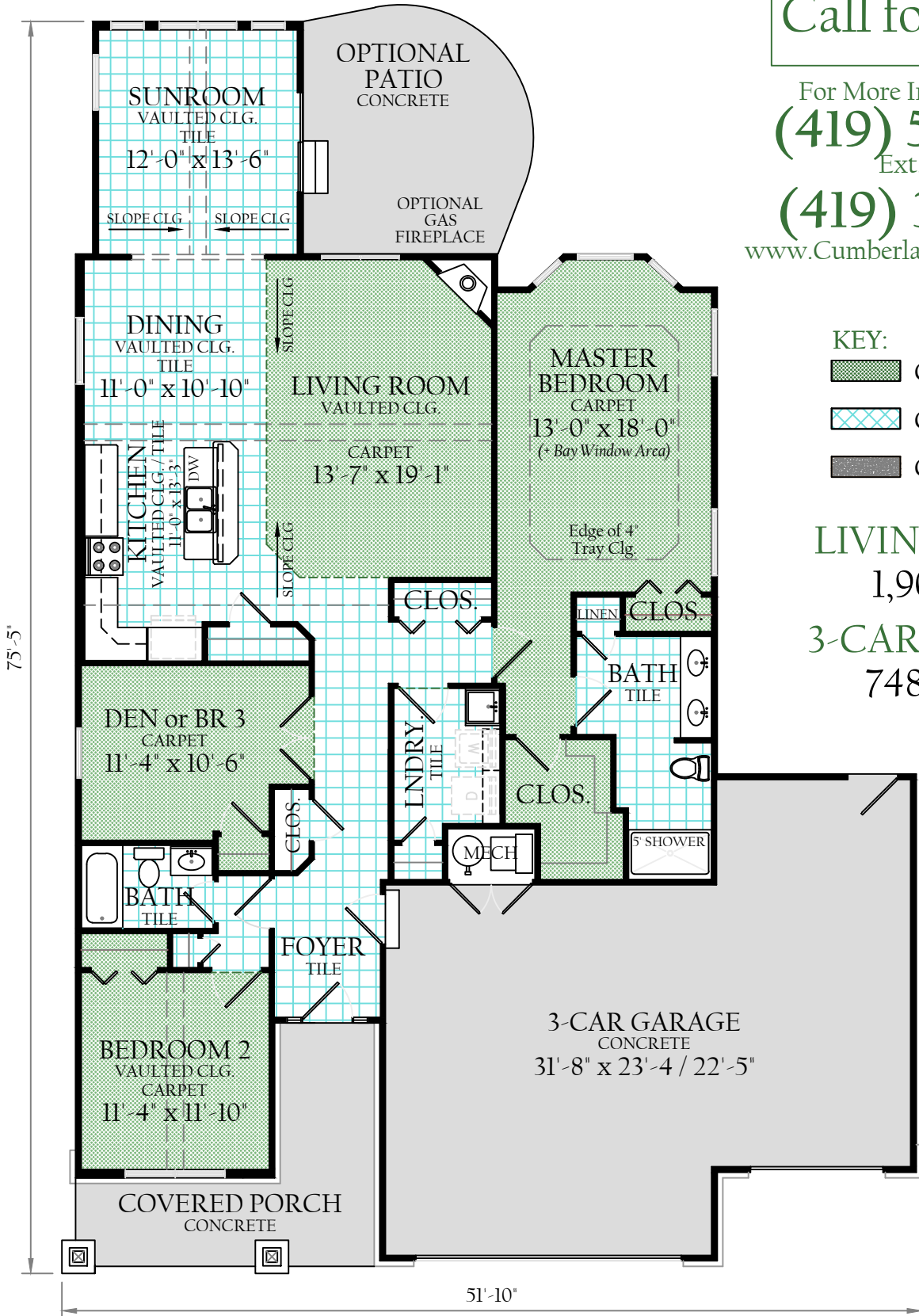
Model Home at 4845 Sylvan Prairie Ct.
(Lot 95, Plat 6)

Call for Pricing

For More Information, Call
(419) 535-5697
Ext. #1 or #2

(419) 351-5320

www.CumberlandConstruction.com



All dimensions and square footages are approximate. Actual sizes may differ from this artist rendering. This drawing may show some items that are optional and extra in cost.

Price and Availability subject to change without notice. Sale Price does not include Refrigerator, Clothes Washer, or Dryer.



(419) 535-5697
Ext. #1 or #2

(419) 351-5320

www.CumberlandConstruction.com

the LEXINGTON at
4845 Sylvan Prairie Ct.

Features:

1,900 Square Feet ±

3 Bedrooms

2 Bathrooms

3-Car Garage

Ceramic Tile

Vaulted Ceilings

Finished Sunroom

Open Plan

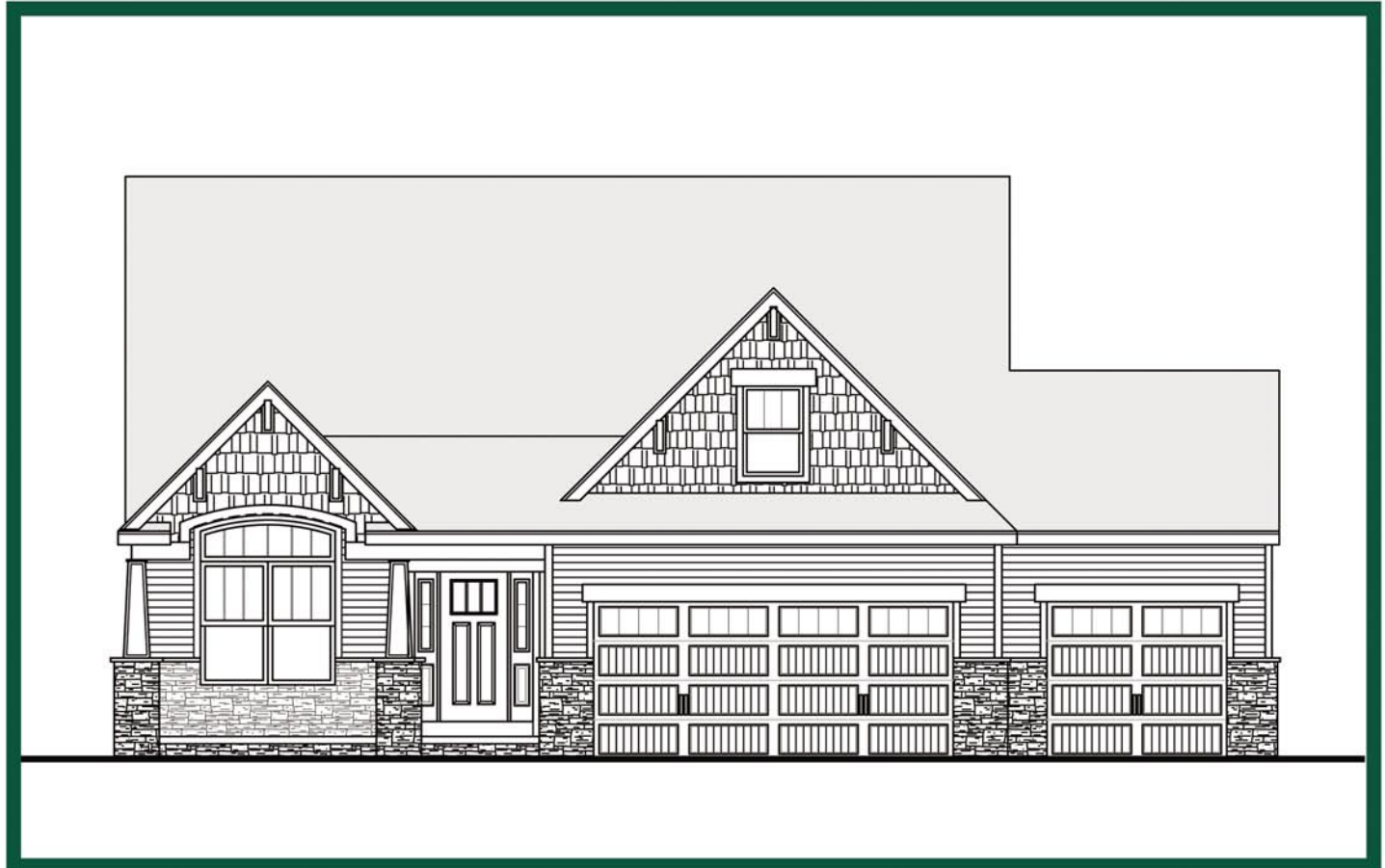
Maple Cabinets

Granite Countertops

Stainless Steel

Appliances

LEXINGTON MODEL with 3-CAR GARAGE at 4845 SYLVAN PRAIRIE CT. (Lot 95, Plat 6)



Finished Home May Vary From This Rendering

4845 Sylvan Prairie Ct. is Currently Under Construction

Square Footages Are Approximate

2.8.18