

LEXINGTON

Model Home at 4841 Sylvan Prairie Ct.
(Lot 94, Plat 6)

Call for Pricing




For More Information, Call

(419) 535-5697
Ext. #1 or #2

(419) 351-5320

www.CumberlandConstruction.com

KEY:

-  CARPET
-  CERAMIC TILE
-  CONCRETE

LIVING AREA -

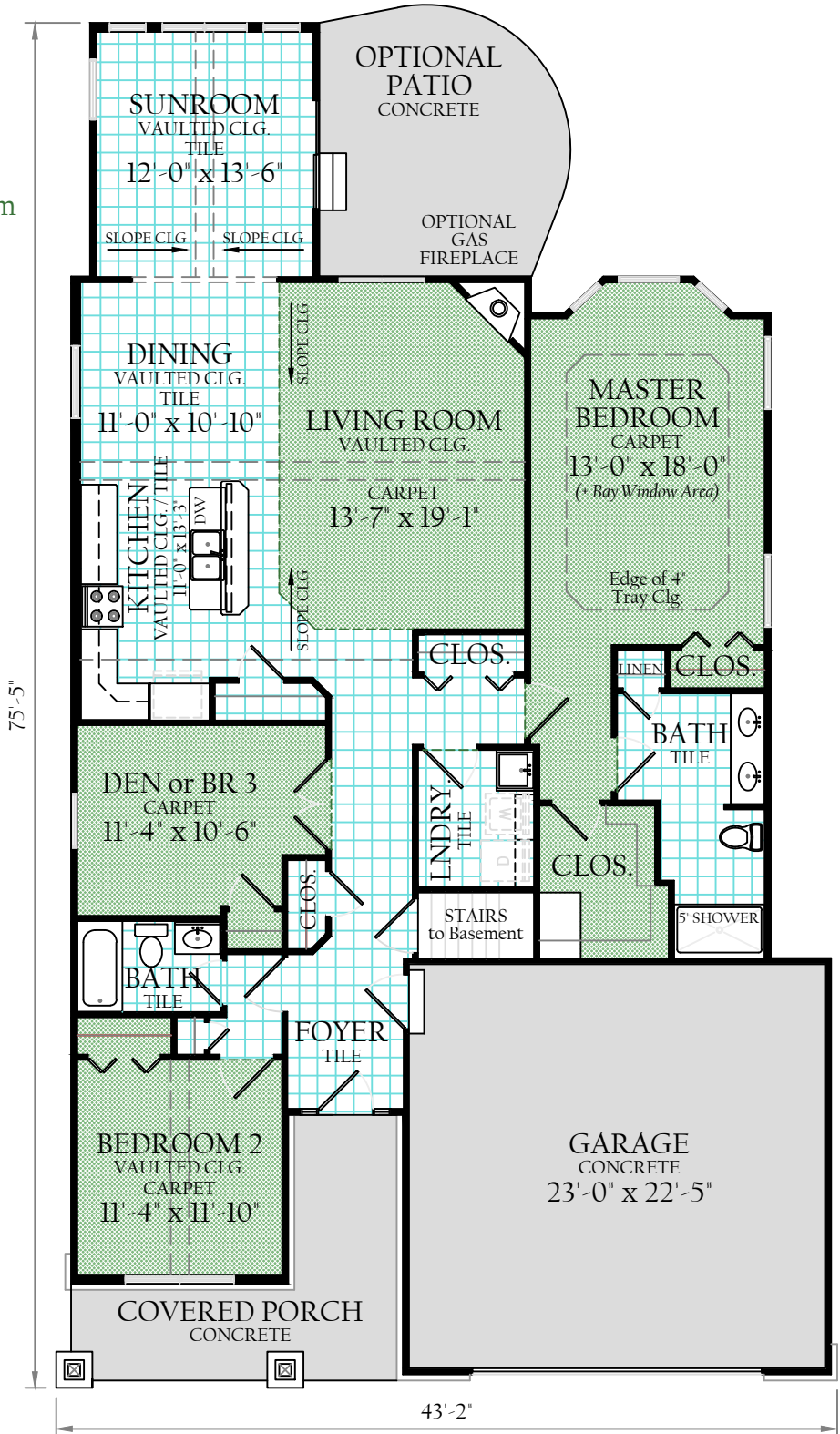
1,875 SQ. FT. ±

2+ - CAR GARAGE -

538 SQ. FT. ±

All dimensions and square footages are approximate. Actual sizes may differ from this artist rendering. This drawing may show some items that are optional and extra in cost.

Price and Availability subject to change without notice. Sale Price does not include Refrigerator, Clothes Washer, or Dryer.





LEXINGTON MODEL at 4841 SYLVAN PRAIRIE CT. (Lot 94, Plat 6)

(419) 535-5697
Ext. #1 or #2

(419) 351-5320

www.CumberlandConstruction.com

the LEXINGTON at
4841 Sylvan Prairie Ct.
Features:

1,875 Square Feet ±
3 Bedrooms, 2 Baths

Basement

Oversize Garage
Ceramic Tile
Vaulted Ceilings
Finished Sunroom
Open Plan
Maple Cabinets
Granite Countertops
Stainless Steel
Appliances



Similar Home Pictured

4841 Sylvan Prairie Ct. is Currently Under Construction

Square Footages Are Approximate

6.21.18