



Cumberland
Construction
Corporation

9328 Bowman Farms Ln. Sylvania (Lot 98, Plat 7)

4 Bedrooms - 2½ Baths - 2868 SF±

BROOKSIDE

Luxury in a Premium Location
Great Location Sylvania Schools
West off Mitchaw Rd., Just South of Brint Rd.

CALL FOR MORE INFORMATION

(419) 535-5697

Ext #1 or #2

(419) 351-5320

or email BBrown@CumberlandConstruction.com
or TBrown@CumberlandConstruction.com

www.CumberlandConstruction.com

This Home Features

Open Plan, 2-Story Foyer

3-Car Garage

Gas Fireplace

Tiled Master Shower

Granite Countertops

Stainless Steel
Appliances

Finished Bonus Space



CALL FOR PRICING

Pricing & Availability
Subject to Change Without
Notice. Sale Price Does Not
Include Refrigerator, Clothes
Washer, or Dryer

KEY TO FLOOR COVERINGS

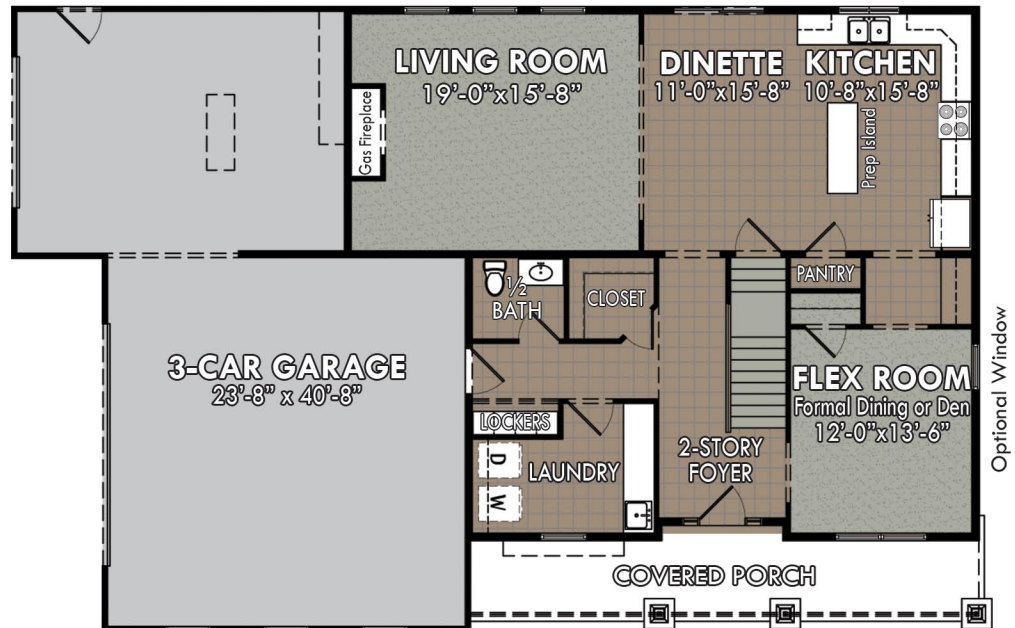
(To Indicate Extent Only;
Actual Colors Will Vary)



CARPET



TILE or WOOD



Cumberland Construction Corporation
Building & Developing Locally Since 1968
2727 N. Holland Sylvania Rd., Suite C
Toledo, OH 43615 Tel. (419) 535-5697

Dimensions & Square Footages are Approximate
Actual Colors & Finishes May Vary from This Artist
Rendering, Depending Upon Options Chosen.
This Drawing May Depict Items That Are
Optional and Extra in Cost.

Design/CAD Services by
GREEN LAKE
DESIGN GROUP, LTD.
3/14/18



**9328 Bowman Farms Ln.
Sylvania (Lot 98, Plat 7)
4 Bedrooms 2½ Baths 2,868 SF±**

BROOKSIDE



Finished Home May Vary From This Rendering

For More Information, visit
www.CumberlandConstruction.com
or call
(419) 535-5697, Ext #1 or #2 / (419) 351-5320

3.14.17